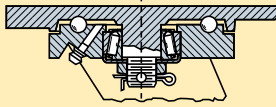


QUALITY FEATURES:

Swivel Construction – 3/8" thick drop forged steel mounting plate; 5/16" x 2 1/2" plate steel legs robotically welded inside and outside to forged steel horn base.



Kingpin – 1" dia. integrally forged with mounting plate, turned and threaded for adjustable 3/4" slotted nut and cotter pin.

Main Load Bearing – CNC-machined 3 1/4" dia. heat-treated raceway; 1/2" dia. hardened and polished steel balls.

Secondary Load Bearing – 1" precision tapered thrust bearing counteracts radial thrust.

Axle – 3/4" dia. hex head with lock nut.

Lubrication Fittings – Ball-check type in swivel assembly and wheel hub.

OPTIONAL ACCESSORIES

– see pages 18 & 19.

- Swivel Locks - 2 or ★ 4 position.
- Wheel Brakes (★-IB, -IRB, ★-ZB [not ★ with tapered bearings], -B).
- Wheel Bearing Seals.

When grueling loads and continuous operations exist, Hamilton's *Extended Service Casters* with standard heat-treated raceways extend caster life. This makes *Series ES* Casters an excellent choice for use on in-plant trailers, towline carts or AGV systems. Features integrally forged steel kingpin—guaranteed for life.

Wheel Bearings –

- **Precision Ball Bearings:** (superior rollability & no greasing required) rotate on (2) 25 mm O.D. x 3/4" I.D. x 1 1/4" long top hat spanners standard in *Duralast®* and *Poly-Soft®* wheels.
- **Tapered Roller Bearings:** (best for towing and side thrust applications) 3/4" mounted directly on axle, available in *Duralast®*, *Poly-Soft®*, Plastex, Forged Steel, Metal, and M.O. Rubber wheels.
- **Straight Roller Bearings:** 1" hardened and ground rollers rotate on 1" O.D. x 3/4" I.D. hardened and ground steel spanner bushing standard in Metal, Plastex, Forged Steel, & M.O. Rubber wheels.



#S-ES-6DH
Swivel showing
Duralast® wheel

Wheel Types



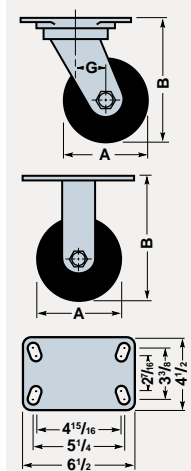
Duralast® Forged Steel Metal Plastex Poly-Soft® M.O. Rubber

★ = available for 1-2 day **PRONTO®** shipment.

Dimensions in Inches



Dia. A	Face	Wheel				Swivel Caster			Rigid Caster			Load Cap. Lbs.	Overall Height B	Swivel Offset G
		Type	Replacement Number	Catalog No. Roller/Prec. BB	Catalog No. Tapered Brgs	Wt. Lbs.	Catalog No. Roller/Prec. BB	Catalog No. Tapered Brgs	Wt. Lbs.					
5	2 1/2	Duralast®	W-525-D-1	S-ES-5DH	X	16 1/2	R-ES-5DH	X	14	1300	7 1/4	7 1/4	2 1/4	
6	2 1/2	Duralast®	W-625-D-1	★ S-ES-6DH	S-ES-6DT	21	★ R-ES-6DH	R-ES-6DT	18 1/2	1600				
		Forged Steel	W-625-FSH-1	★ S-ES-6FSH	S-ES-6FST	22	★ R-ES-6FSH	R-ES-6FST	19	2400				
		Metal	W-625-M-1	★ S-ES-6MH	S-ES-6MT	20	★ R-ES-6MH	R-ES-6MT	17 1/2	2200				
		Plastex †	W-625-P-1	★ S-ES-6PH	S-ES-6PT	15	★ R-ES-6PH	R-ES-6PT	12 1/2	1800				
		M.O. Rubber	W-625-R-1	★ S-ES-6RH	S-ES-6RT	20	★ R-ES-6RH	R-ES-6RT	17 1/2	540				
		Duralast®	W-630-DB-3/4	★ S-ES-63DB	★ S-ES-63DT	23	★ R-ES-63DB	★ R-ES-63DT	21	2200				
8	2 1/2	Forged Steel	W-630-FSH-1	★ S-ES-63FSH	★ S-ES-63FST	32	★ R-ES-63FSH	★ R-ES-63FST	29 1/2	2400				
		Plastex †	W-630-P-3/4	★ S-ES-63PH	S-ES-63PT	18	★ R-ES-63PH	R-ES-63PT	15	2200				
		Poly-Soft®	W-630-SPB-3/4	★ S-ES-63SPB	★ S-ES-63SPT	23	★ R-ES-63SPB	★ R-ES-63SPT	21	1800				
		M.O. Rubber*	W-630-R-1	★ S-ES-63RH	X	20	★ R-ES-63RH	X	17 1/2	680				
		Duralast®	W-825-D-1	★ S-ES-8DH	S-ES-8DT	27	★ R-ES-8DH	R-ES-8DT	24 1/2	2000				
		Metal	W-825-M-1	★ S-ES-8MH	S-ES-8MT	26	★ R-ES-8MH	R-ES-8MT	23 1/2	2400				
10	2 1/2	Plastex	W-825-P-1	★ S-ES-8PH	S-ES-8PT	17 1/2	★ R-ES-8PH	R-ES-8PT	15	2000				
		M.O. Rubber	W-826-R-1	★ S-ES-8RH	S-ES-8RT	20 1/2	★ R-ES-8RH	R-ES-8RT	18	670				
		Duralast®	W-830-DB-3/4	★ S-ES-83DB	★ S-ES-83DT	28	★ R-ES-83DB	★ R-ES-83DT	25	2400				
		Forged Steel	W-830-FSH-1	★ S-ES-83FSH	★ S-ES-83FST	36	★ R-ES-83FSH	★ R-ES-83FST	33 1/2	2400				
		Poly-Soft®	W-830-SPB-3/4	★ S-ES-83SPB	★ S-ES-83SPT	28	★ R-ES-83SPB	★ R-ES-83SPT	25	2000				
		M.O. Rubber	W-830-R-1	★ S-ES-83RH	S-ES-83RT	26	★ R-ES-83RH	R-ES-83RT	23 1/2	840				
10	2 1/2	Duralast®	W-1025-D-1	★ S-ES-10DH	S-ES-10DT	26	★ R-ES-10DH	R-ES-10DT	23 1/2	2400				
		Metal	W-1025-M-1	★ S-ES-10MH	S-ES-10MT	28	★ R-ES-10MH	R-ES-10MT	25 1/2	2400				
		Plastex	W-1025-P-1	★ S-ES-10PH	S-ES-10PT	19 1/2	★ R-ES-10PH	R-ES-10PT	17	2400				
		M.O. Rubber	W-1025-R-1	★ S-ES-10RH	S-ES-10RT	24 1/2	★ R-ES-10RH	R-ES-10RT	22	790				
		Duralast®	W-1030-DB-3/4	★ S-ES-13DB	★ S-ES-13DT	31	★ R-ES-13DB	★ R-ES-13DT	28 1/2	2400				
		Forged Steel	W-1030-FSH-1	★ S-ES-13FSH	★ S-ES-13FST	40	★ R-ES-13FSH	★ R-ES-13FST	37 1/2	2400				
	3	Poly-Soft®	W-1030-SPB-3/4	★ S-ES-13SPB	★ S-ES-13SPT	31	★ R-ES-13SPB	★ R-ES-13SPT	28 1/2	2400				
		M.O. Rubber	W-1030-R-1	★ S-ES-13RH	S-ES-13RT	27	★ R-ES-13RH	R-ES-13RT	24 1/2	1000				



SWIVEL MOUNTING PLATE 4 1/2" x 6 1/2", rigid plate 5" x 7", both with holes slotted 2 3/16" x 4 15/16" to 3 3/16" x 5 1/4" for 1/2" bolts.

* This wheel lubricated through lube axle.
† Straight-sided wheel.

EXTENDED SERVICE CASTERS