

Standard Duty Casters Series 52 — Cap. to 900 lbs.



#S-526-TE Swivel showing Versa-Tech® wheel

PRONTO® availability on a quality caster equipped with:

- 4 Position Swivel lock
- Side Foot Brake
- Sealed Swivel Assembly

Hard to believe? Not if you've dealt with Hamilton before.

Hamilton's **52 Series** gives you an unprecedented range of optional accessories in a value-priced, multi-purpose caster in the 900-lb. class.

Just look at the many options available and featured on these facing pages! Then look at the extensive range of wheel types and sizes available in the chart on page 41. You'll feel like you're specifying casters customized for your very own application... but surprise!

They're in stock and ship-able **PRONTO®** even equipped with options (in limited quantities, of course; other options take only a week or two longer).

Improvements to the **52 Series** include the addition of the **Poly-Soft®** wheel type (a high performing 82A durometer polyurethane on cast iron), precision ball bearings now standard in **Duralast®**, **Unilast™**, & new **Poly-Soft®** wheels, and a new tread contact brake (-ZB).

Series 52 swivel models feature a full 1/4" thick mounting plate, two separate hardened raceways, husky 2" wide legs, and a 5/8" spin-riveted kingpin. The lustrous zinc plated finish will help these long-lasting casters keep their good looks.

Now, you can truly have it *your way*, **PRONTO®!**

OPTIONAL ACCESSORIES

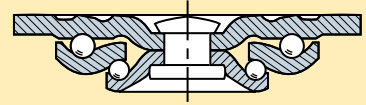
— see pages 18 & 19.

- Swivel Locks - ★ 4-position.
- Wheel Brakes (★ -FB, -B [all models], -FRB, ★ -CB [on 4" models and larger], ★ -ZB [on 5" models and larger]).
- Wheel Bearing Seals.
- ★ Sealed Swivel Assembly.



QUALITY FEATURES:

Swivel Construction — formed steel mounting plate and horn base. Legs 3/16" x 2" plate steel, contoured and continuously welded to horn base.



Kingpin — 5/8" diameter orbitally formed rivet.

Main and Secondary Load Bearings — hardened and polished steel balls rotate in two heat treated raceways.

Axle — 1/2" diameter bolt with lock nut.

Wheel Bearings —

- **Precision Ball Bearings:** (superior rollability & no greasing required) rotate on (2) 17mm O.D. x 1/2" I.D. x 1 3/16" long top hat spanners (**Duralast®**, **Poly-Soft®**, and **Unilast™**).
- **Straight Roller Bearings:** case hardened, rotate on 3/4" O.D. x 1/2" I.D. x 2 1/2" long hardened and ground steel spanner bushing, (Metal, Plastex, **Poly-Tech®**, M.O. Rubber, & **Versa-Tech®**).
- **Delrin® Bearings (Aqualite®).**
- **Ball Bearings**, non-precision, (**Ace-Tuf®** Wheels).

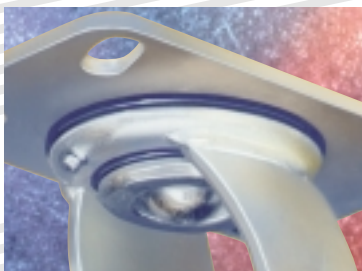
Lubrication Fittings — in swivel assembly and to roller bearings in wheels.

#R-526-P Rigid showing Plastex wheel



Zinc plated **Series 52** rigids have 1/4" x 2" plate steel legs, fully welded inside and outside to 1/4" thick rounded-corner mounting plates.

★ These options available **PRONTO®!**



★ Sealed Swivel Assembly (suffix -SS)



★ #S-525-R-4SL 4-Position Swivel Lock (suffix -4SL) with Moldon Rubber-Tired wheel



★ #S-525-UY-FB Side Foot Brake (suffix -FB) with Unilast™ wheel

#S-525-NF-CB
Swivel with
Tread Contact
Brake
(suffix -CB)
and Poly-Tech®
wheel



#R-526-V-B
Rigid showing
Thumbscrew
Brake
(suffix -B)
and V-Grooved
wheel



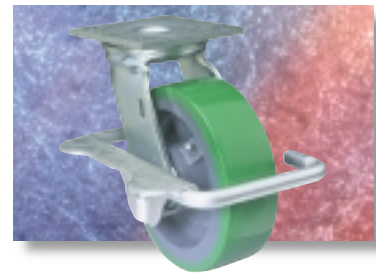
Wheel Types



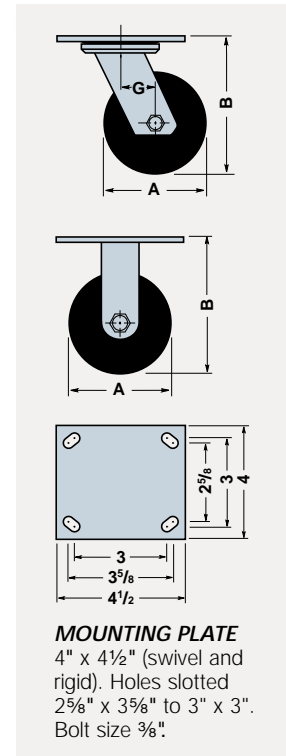
★ = available for 1-2 day **PRONTO**® shipment.

Dimensions in Inches

Dia. A	Face	Wheel		Swivel Caster		Rigid Caster		Load Cap. Lbs.	Overall Height B	Swivel Offset G
		Type	Replacement Number	Catalog Number	Wt. Lbs.	Catalog Number	Wt. Lbs.			
3 1/4	2	Duralast®*	W-320-D-3/4	★S-523-D	5	★R-523-D	4	575	5 1/4	1 1/4
		Plastex*	W-320-P-3/4	★S-523-P	4	★R-523-P	3	700		
4	2	Aqualite®	W-420-AZ-3/4	★S-524-AZ	4 1/2	★R-524-AZ	3 3/4	550	5 5/8	1 1/16
		Duralast®	W-420-DB-1/2	★S-524-DB	7 1/2	★R-524-DB	7	750		
		Metal	W-420-M-3/4	★S-524-M	6 3/4	★R-524-M	6 1/4	900		
		Plastex*	W-420-P-3/4	★S-524-P	5	★R-524-P	4 1/2	800		
		Poly-Soft®	W-420-SPB-1/2	★S-524-SPB	7 1/2	★R-524-SPB	7	600		
		Poly-Tech®*	W-420-NF-3/4	★S-524-NF	4 3/4	★R-524-NF	4 1/4	750		
		M.O. Rubber*	W-420-R-3/4	★S-524-R	7	★R-524-R	6 1/2	300		
		Unilast®	W-420-UYB-1/2	★S-524-UYB	5	★R-524-UYB	4 1/2	750		
		Versa-Tech®*	W-420-TE-3/4	★S-524-TE	4 1/2	★R-524-TE	4	300		
5	2	Aqualite®	W-520-AZ-3/4	★S-525-AZ	4 3/4	★R-525-AZ	4	650	6 1/2	1 1/8
		Duralast®	W-520-DB-1/2	★S-525-DB	8	★R-525-DB	7 1/4	900		
		Ebonite*	W-520-EH-3/4	★S-525-E	5 3/4	★R-525-E	5	550		
		Flexonite*	W-520-FH-3/4	★S-525-F	6	★R-525-F	5 1/4	325		
		Metal	W-520-M-3/4	★S-525-M	8 1/2	★R-525-M	7 3/4	900		
		Plastex	W-520-P-3/4	★S-525-P	5 3/4	★R-525-P	5	900		
		Poly-Soft®	W-520-SPB-1/2	★S-525-SPB	8	★R-525-SPB	7 1/4	840		
		Poly-Tech®*	W-520-NF-3/4	★S-525-NF	5 1/4	★R-525-NF	4 1/2	900		
		M.O. Rubber	W-520-R-3/4	★S-525-R	7 1/4	★R-525-R	6 1/2	350		
		Unilast®	W-520-UYB-1/2	★S-525-UYB	5 1/2	★R-525-UYB	4 3/4	900		
		Versa-Tech®*	W-520-TE-3/4	★S-525-TE	5	★R-525-TE	4 1/4	350		
6	2	Aqualite®	W-620-AZ-3/4	★S-526-AZ	5 1/4	★R-526-AZ	4 3/4	750	7 1/2	1 1/16
		Duralast®	W-620-DB-1/2	★S-526-DB	9 1/2	★R-526-DB	9	900		
		Ebonite*	W-620-EH-3/4	★S-526-E	6 1/2	★R-526-E	6	610		
		Metal	W-620-M-3/4	★S-526-M	9 1/4	★R-526-M	8 3/4	900		
		Plastex	W-620-P-3/4	★S-526-P	6 1/2	★R-526-P	6	900		
		Poly-Soft®	W-620-SPB-1/2	★S-526-SPB	9 1/2	★R-526-SPB	9	900		
		Polyplast	W-620-AY-3/4	★S-526-AY	6 1/4	★R-526-AY	5 3/4	900		
		Poly-Tech®*	W-620-NF-3/4	★S-526-NF	5 3/4	★R-526-NF	5 1/4	900		
		M.O. Rubber	W-620-R-3/4	★S-526-R	8	★R-526-R	7 1/2	410		
		Unilast®	W-620-UYB-1/2	★S-526-UYB	6	★R-526-UYB	5 1/2	900		
Versa-Tech®*	W-620-TE-3/4	★S-526-TE	5 1/2	★R-526-TE	5	410				
8	2	Ace-Tuf®	W-8-AT-3/4	★S-4208-AT	8	★R-4208-AT	7 1/2	400	9 1/2	2 5/16
		Aqualite®	W-820-AZ-3/4	★S-528-AZ	6	★R-528-AZ	5 1/2	900		
		Duralast®	W-820-DB-1/2	★S-528-DB	12 3/4	★R-528-DB	12 1/4	900		
		Metal	W-820-M-3/4	★S-528-M	12	★R-528-M	11 1/2	900		
		Plastex	W-820-P-3/4	★S-528-P	8	★R-528-P	7 1/2	900		
		Metal	W-820-M-3/4	★S-528-M	12	★R-528-M	11 1/2	900		
		Polyplast	W-820-AY-3/4	★S-528-AY	7 3/4	★R-528-AY	7 1/4	900		
		Poly-Soft®	W-820-SPB-1/2	★S-528-SPB	12 3/4	★R-528-SPB	12 1/4	900		
		Poly-Tech®*	W-820-NF-3/4	★S-528-NF	6 1/2	★R-528-NF	6	900		
		M.O. Rubber	W-820-R-3/4	★S-528-R	11	★R-528-R	10 1/2	500		
		Unilast®	W-820-UYB-1/2	★S-528-UYB	6 3/4	★R-528-UYB	6 1/4	900		
		Versa-Tech®*	W-820-TE-3/4	★S-528-TE	6 1/4	★R-528-TE	5 3/4	500		



#S-526-D-FRB Rap-A-Round Side Foot Brake (suffix -FRB) with Duralast® wheel



*These wheels lubricated through lube axle.

STANDARD DUTY CASTERS (cont'd)