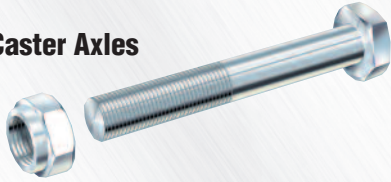


Bearings, Bushings and Axles

Here is a listing of almost all axles used in Hamilton Casters. Remember that for casters employing spanner bushings (see below), axle size is not the same as bearing size. All these axles and nuts are furnished zinc-plated. The bolt-type axles used in the majority of casters are all supplied with locknuts. Many of these are drilled for lubrication.

Caster Axles



Size		BOLT-AND-NUT TYPE AXLES		Hamilton No.
Dia.	Lgth.	Used in Caster Series-		
5/16	2	222-1/2		320110
5/16-3/8	2 3/8	300		320120
3/8	2 3/8	223		320230
		223 (lube type)		320240
	2 1/4	HL (except 3")		320260
7/16	2 3/8	224		320410
		224 (lube type)		320400
1/2	3	BC		320560
		BC (lube type)		320610
	3 1/4	WHS, STA (D)		320580
	3 1/2	HS, WH, EC, (2" face wheels), 62, MS, GS, 52, 4000 (8), 8006/8526/8208/8528, TG, , TX, PF, WW, UHS		320620
	4	-FB Casters (2" wide)		320640
	4 1/2	7008, 7108, 8008		320660
3/4	5	5208, 5210; 7010, 8010 w/o brake; 7008, 8008 w/brake		320680
	5 1/2	7010 & 8010 brake models		320700
	6	SPHS, SPWH		320710
	6 1/2	HS2		320720
	5	SEC, EHD, CH, ES, FM, EC (3" face wheels), 4010, 4012, 8410, 8412		320900
1	5 1/2	70104, -FB casters (3" wide)		320920
	6	EHD (4" face), 7012, 70124		320940
	8	SPCH		320960
	9	EHD2		320970
1 1/4	11	7208, 7210		321005
	5	EPSD (3" wide)		321140
		UHD (lube-type)		321120
	6	EPSD (4" wide)		321153
	7 1/2	7016, 7116, 70166		321160
	8 1/4	70188, 7188		321180
	9	MDD (3" face)		321200
	11 1/8	MDD (4" face wheels)*		C10410*
	13 1/8	7212		321220
	15 1/4	72166		321235
1 1/2	5 1/2	MD (3" face wheels)		321420
	6 3/4	MD (4" face wheels)		321440
	7 1/2	MD (5" face wheels)		321460
	9 1/2	70210, 71210		321480
	11	70250, 71250		321500
	11 1/4	MDD (4" face wheels)		321520
	18 1/4	72188		321540
	22 3/8	72210, 72250		321590

Precision Tapered Roller Bearings



Description	Mfg. Part No.	Hamilton No.
3/4" Cup	LM11910	450200
3/4" Cone	LM11949	450220
1" Cup	L44610	450280
1" Cone	L44643	450300
1 1/4" Cup	LM67010	450440
1 1/4" Cone	LM67048	450460
1 1/4" Cup (Heavy Duty)	HM88510	450380
1 1/4" Cone (Heavy Duty)	HM88542	450400

Straight Roller Bearings



I.D. (in.)	O.D. (in.)	Length (in.)	Hamilton No.	
3/8	1 1/8	1 1/4	440020	
		1 1/2	450040	
1/2	1 3/8	1 1/4	440120	
		2	440160	
5/8	1 1/8	1 1/2	440200	
		1 3/4	440280	
	1 3/8	1 1/2	440300	
		2	440340	
3/4	1 3/8	1 1/4	440400	
		2	440460	
1	1 1/8	2 1/2	440820	
		3 1/4	440840	
	1 1/4	2 1/2	431060	
		3	440880	
	1 1/4	2 3/8	3	440900
			4	440900
1 1/2	2 3/8	2 1/2	431120	
		3	431140	
	2 3/8	3	431300	
		4	431380	
1 1/2	2 3/8	2 1/2	431420	
		3	431440	
	2 3/8	3	431480	
		4	431520	
1 1/2	2 3/8	3	431580	
		4	431620	

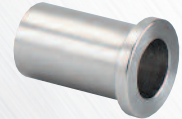
Precision Ball Bearings



I.D. (in.)	I.D. (mm)	Description	Mfg. Part No.	Hamilton No.
1/2 *	17	Double Sealed	6003-2RS	470090
			6203-2RS	470100
3/4 *	25	Double Shielded Stainless	SS6003-ZZ	470120
			SS6203-ZZ	470110
3/4	X	Double Sealed Single Row Flange-Type	X	470065
			Double Sealed Double Row Flange-Type	X

*When used in conjunction with Top Hat Spanner.

Top Hat-Style Spanner Bushings



I.D. (in.)	O.D. (mm)	Where Used	Hamilton No.
1/2	17	Stainless Steel (STL Series)	351123
		Standard 2" wide wheels	351100
		Stainless Steel 2" wide wheels	351120
3/4	25	Standard 2 1/2" or 3" wide wheels	351125

Spanner Bushings



I.D.	O.D.	Lgth.	Used in Caster Series-	Old Hamilton No.	NEW Hamilton No.	
3/8	1/2	1 1/8	300 (with -TB)	SB-5B	340010	
		1 1/4	STL	SSB-3	340040	
		1 1/2	300	SB-18D	340060	
	5/8	1 3/8	HL (with-TB)	SB-22	340070	
1/2	3/4	1 1/2	HL-4, HL-5	SB-17	340090	
		2	224	SB-12	340100	
1	1 1/2	1 5/8	TX	SB-3D	340130	
		2 1/2	WW-8	SB-6	340170	
		1	-	SB-15	340180	
		2 3/8	-	X	340178	
		2 3/4	-	SB-7	340190	
	3/4	1	3	STA, WHS	SSB-4	340205
			2 1/2	HS, WH, EC (3" face wheels), GS, MS, 52, WW, 4000 (8"), BC/PF, 62, TG, UHS 8006/8526/8208/8528	SB-2D	340220
			3 3/8	7008, 8008	SB-8	340230
			4 1/8	5208, 5210, 7010, 8010	SB-9	340260
			3 1/2	-	SB-27	340280
1	1 1/4	3 3/8	SEC, EHD, CH, ES, FM, EC (3" face wheels), 8410/8412	SB-1D	340300	
		4 1/4	7012, 7112, EHD (4" face)	SB-19	340310	
		2 5/8	-	SB-16	340320	
1 1/4	1 1/2	3 3/8	UHD	SB-13	340340	
		4 1/8	MDD	SB-14	340350	
1 1/4	1 1/2	3 3/8	MD & MDD (3" face wheels)	SB-24	340360	
		4 1/8	MD & MDD (4" face wheels)	SB-26	340370	

◆ Shouldered Axle. ◆ Stainless Steel.
* Axle threaded with nuts both ends.

◆ Stainless Steel.
◆ Includes drilled hole for use with Lube-type axles. Drilling of other sizes may be specified at extra cost.