

OPTIONAL EXTRAS (more help on page 12)

- **Wheel Bearing Seals.**
- **Keywords, and/or set screws**
– for locking wheels on shaft (plain bore).
- **Special Hub Length**
– hubs can be cut to provide shorter length, spacer washers furnished to increase length.
- **Spanner Bushings**
– select from page 90.
- **Extra hard (70D) urethanes available for higher capacities**
– Consult factory.

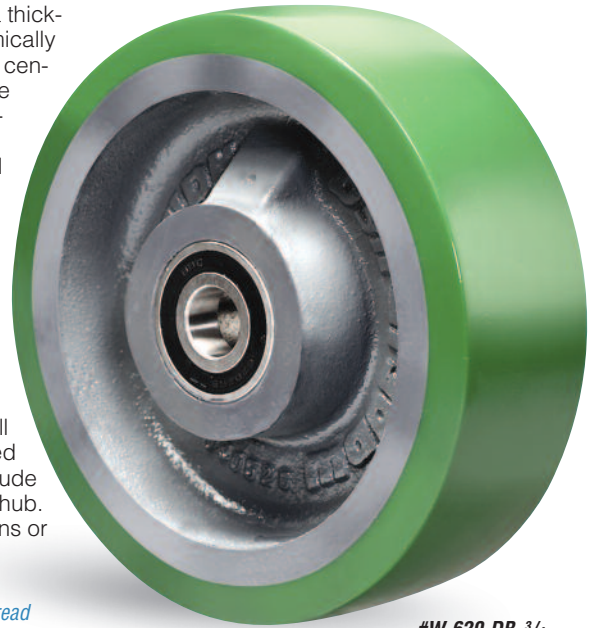
PHYSICAL PROPERTIES

- **Composition**
– high grade liquid cast polyurethane.
- **Hardness** – 90-95 Durometer (Shore A).
- **Bashore Rebound** – 29%.
- **Elongation at Break** – 430%.
- **Tensile Strength** – 7000-7400 psi.
- **Tear Strength** – 700 pli. (DIE C).
- **Abrasion Resistance**
– 5-10 times ordinary rubber.
- **Temperature Range** – -50° to +200° F. intermittent; 0° to 180°F continuous. Not damaged by occasional steam cleaning.

Duralast® — the protective wheel that wears like steel — is liquid cast to a thickness of approximately ½" and chemically bonded onto heavy-duty iron wheel centers. The distinctive green treads are chemically inert, non-sparking, non-conductive, impervious to ozone, grease and most oil & solvents, and will not mark floors.

Duralast® Wheels are also guaranteed against tread separation for one year in ordinary free-wheeling applications (contact factory for excepted applications). They are available without bearings, with straight roller bearings, precision ball bearings, or with precision tapered bearings as listed below. All wheel sizes with straight and tapered roller bearings over 5" diameter include ball-check lubrication fittings in the hub. For even higher capacity applications or for corrosive conditions, see the Superlast® Wheels on page 72.

For help selecting the best polyurethane tread type for your application, see the Wheel Performance Characteristics chart on pages 18 & 19.



#W-620-DB-¾



★ = same day/next day PRONTO® shipment.

D Series Selection Table

3YR = 3 Year Warranty applies

Dia.	Face	Hub Length	Cap. Lbs.	Plain Bore		Straight Roller Bearings		Precision Ball Bearings		Tapered Roller Bearings		Hub Outside Dia.	Wt. Lbs.
				Hamilton Model No.	Bore Sizes	Hamilton Model No.	Bearing Sizes	Hamilton Model No.	Bearing Sizes*	Hamilton Model No.	Bearing Sizes		
3 ¼	1 ½	1 ¾	475	★W-315-DL-1 ¾*	1 ¾	★W-315-D	½-¾-¾	X	X	X	X	1 ¾	1 ¾
	2	2 ¼	575	★W-320-DL-1 ¾*	1 ¾	★W-320-D	½-¾-¾	X	X	X	X	1 ¾	2 ½
4	1 ½	1 ¾	675	★W-415-DL-1 ¾	1 ¾	★W-415-D	½-¾-¾	X	X	X	X	1 ¾	2 ½
	2	2 ¼	750	★W-420-DL-	1 ¾ or 1 ½	★W-420-D	½-¾-¾-1	★W-420-DB-½ 3YR	½	X	X	1 ¾	4
5	1 ½	1 ¾	700	★W-515-DL-1 ¾	1 ¾	★W-515-D	½-¾-¾	W-515-DB-½ 3YR	½	X	X	2 ¼	3
	2	2 ¼	1050	★W-520-DL-	1 ¾ or 1 ½	★W-520-D	½-¾-¾-1	★W-520-DB-½ 3YR	½	★W-520-DT-¾ 3YR	¾	2 ¼	4 ½
	2 ½	2 ¾	1300	★W-525-DL-1 ½	1 ½	W-525-D	1-1 ¼	X	X	X	X	2 ½	6
6	1 ½	1 ¾	850	★W-615-DL-1 ¾	1 ¾	★W-615-D	½-¾-¾	W-615-DB-½ 3YR	½	W-615-DT-¾ 3YR	¾	2 ¼	4 ½
	2	2 ¼	1200	★W-620-DL-	1 ¾ or 1 ½	★W-620-D	½-¾-¾-1	★W-620-DB-¾ 3YR	½-¾	★W-620-DT-¾ 3YR	¾	2 ¼	5 ¾
	2 ½	3 ¼	1600	★W-625-DL-1 ½	1 ½	★W-625-D	1-1 ¼	★W-625-DB-¾ 3YR	¾	W-625-DT-¾ 3YR	¾-1-1 ¼	2 ¼	10 ¼
	3	3 ¼	2200	★W-630-DL-1 ½	1 ½	★W-630-D	1-1 ¼	★W-630-DB-¾ 3YR	¾-1	★W-630-DT-¾ 3YR	¾-1-1 ¼	2 ¼	12
7	2	2 ¼	1400	★W-720-DL-	1 ¾ or 1 ½	W-720-D	¾-¾-1	W-720-DB-½ 3YR	½	W-720-DT-¾ 3YR	¾	2 ¼	7
	2	2 ¼	1500	★W-820-DL-	1 ¾ or 1 ½	★W-820-D	½-¾-¾-1	★W-820-DB-¾ 3YR	½-¾	★W-820-DT-¾ 3YR	¾	2 ¾	8 ¾
8	2 ½	3 ¼	2000	★W-825-DL-1 ½	1 ½	★W-825-D	1-1 ¼	★W-825-DB-¾ 3YR	¾	W-825-DT-¾ 3YR	¾-1-1 ¼	2 ¼	16
	3	3 ¼	2500	★W-830-DL-	1 ½ or 2 ¾	★W-830-D	1-1 ¼	★W-830-DB-¾ 3YR	¾-1	★W-830-DT-¾ 3YR	¾-1-1 ¼	2 ¼	16 ¾
	4	4 ¼	3200	★W-840-DL-1 ½	1 ½	W-840-D	1-1 ¼	X	X	X	X	2 ¼	17
	2 ½	3 ¼	2500	★W-1025-DL-1 ½	1 ½	★W-1025-D	1-1 ¼	★W-1025-DB-¾ 3YR	¾	W-1025-DT-¾ 3YR	¾-1-1 ¼	3	15
10	3	3 ¼	3000	★W-1030-DL-	1 ½ or 2 ¾	★W-1030-D	1-1 ¼-1 ½	★W-1030-DB-¾ 3YR	¾-1	★W-1030-DT-¾ 3YR	¾-1-1 ¼	3	20 ½
	5	5 ¼	5000	★W-1050-DL-2 ¾	2 ¾	W-1050-D	1 ¼-1 ½	X	X	W-1050-DT-1 ¼ 3YR	1 ¼	3 ¼	45
	2 ½	3 ¼	2800	★W-1225-DL-	1 ½ or 2 ¾	W-1225-D	1-1 ¼-1 ½	X	X	W-1225-DT-¾ 3YR	¾-1-1 ¼	3 ½	33
12	3	3 ¼	3500	★W-1230-DL-	1 ½ or 2 ¾	★W-1230-D	1-1 ¼-1 ½	★W-1230-DB-¾ 3YR	¾-1	★W-1230-DT-¾ 3YR	¾-1-1 ¼	3 ½	38
	4	4 ¼	4800	★W-1240-DL-	2 ¾ or 2 ¾	W-1240-D	1-1 ¼-1 ½	X	X	★W-1240-DT-¾ 3YR	1-1 ¼-1 ½	3 ¾	43
	5*	5 ¼	6200	★W-1250-DL-2 ¾	2 ¾	W-1250-D	1 ¼-1 ½	X	X	W-1250-DT-¾ 3YR	1 ¼-1 ½	4	54
	5	5 ¼	6000	W-1251-DL-2 ¾	2 ¾	W-1251-D	1 ¼-1 ½	X	X	W-1251-DT-1 ¼ 3YR	1 ¼	3 ¾	55
	5*	5 ¼	5500	★W-1450-DL-2 ¾	2 ¾	W-1450-D	1 ¼-1 ½	X	X	W-1450-DT-¾ 3YR	1 ¼-1 ½	4	64
16	3*	3 ¼	3750	★W-1630-DL-	2 ¾ or 2 ¾	W-1630-D	1-1 ¼-1 ½	X	X	W-1630-DT-¾ 3YR	1-1 ¼	3 ¼	32
	4	4 ¼	5500	★W-1640-DL-	2 ¾ or 2 ¾	W-1640-D	1-1 ¼-1 ½	X	X	★W-1640-DT-1 ¼ 3YR	1 ¼	3 ¾	60
	5*	5 ¼	7700	★W-1650-DL-	2 ¾-3 ¼-3 ¼	W-1650-D	1 ½-1 ¾-2	X	X	W-1650-DT-¾ 3YR	1 ¼-1 ½	4 ¼	79
18	5*	5 ¼	8400	★W-1850-DL-	2 ¾-3 ¼-3 ¼	W-1850-D	1 ½-1 ¾-2	X	X	W-1850-DT-¾ 3YR	1 ¼-1 ½	4 ¼	89
	6	6 ½	7500	W-1860-DL-3 ¼	3 ¾	W-1860-D-1 ¼	1 ¾	X	X	W-1860-DT-¾ 3YR	1 ¼-1 ½-2	5 ½	140
20	5*	5 ¼	9000	★W-2050-DL-	2 ¾-3 ¼-3 ¼	W-2050-D	1 ½-1 ¾-2	X	X	W-2050-DT-¾ 3YR	1 ¼-1 ½	4 ¼	101

* Precision Ball Bearings include top hat spanners that add ¼" to the published hub length.

* The bearing size represents the inside diameter of the top hat spanners (included).

* These wheels are spoke-type; all others are solid-web.

† Indicates † thick polyurethane tread.



Not all sizes have solid web center – see chart.

To order, add bore or bearing size to Hamilton number. Example: W-620-DB-½.