

Precision Super Duty Casters

Series PSD — Cap. to 5,000 lbs.



#S-PSD-8FS
Swivel showing
Forged Steel wheel

The distinctive feature of these drop forged steel **Precision Super Duty** Casters is that *both* the secondary thrust bearing and main load bearing are precision-type, self-contained unit bearings for smoother swiveling under demanding loads. All forged steel wheels are machined with a slight crown to improve rollability and swiveling.

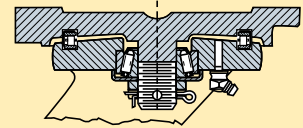
The term "precision" indicates that both the secondary thrust bearing and the main load bearing are precision-made, self-contained unit bearings—a design rarity in the commercial caster marketplace. It is not meant to imply that other caster dimensions are held to closer tolerances than normal in the industry.

OPTIONAL ACCESSORIES

- Swivel Locks - 2 or 4 position.
- Wheel Brakes (-ZB, -B).
- Wheel Bearing Seals.
- V-Grooved wheel models.

QUALITY FEATURES:

Swivel Construction – ½" thick drop forged steel mounting plate; ¾" x 3" plate steel legs robotically welded inside and out to forged steel horn base.



Kingpin – 1" dia. integrally forged with mounting plate and threaded for adjustable slotted nut and cotter pin.

Main Load Bearing – 5" dia. sealed precision unit thrust bearing assures longer life in continuous heavy duty applications.

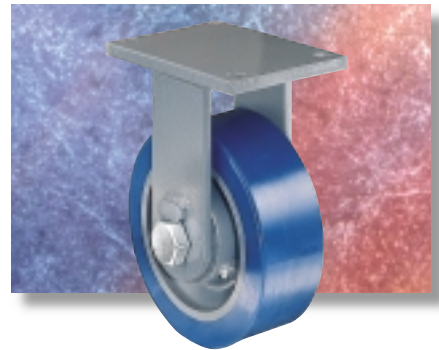
Secondary Load Bearing – 1" precision tapered thrust bearing counteracts radial thrust.

Axle – 1" dia. hex head with lock nut.

Wheel Bearings – 1" precision tapered bearings are well-suited for continuous or towing applications.

Lubrication Fittings – Ball-check type in swivel assembly and wheel hub.

#R-PSD-8SYT Rigid showing
Superlast® wheel

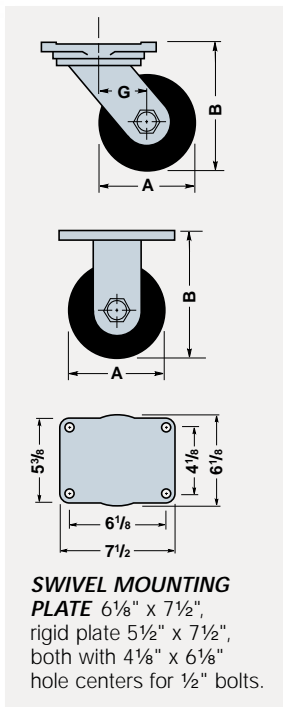


3YR = 3 Year Warranty applies

Wheel Types



Forged Steel Superlast® SuperlastXC®



★ = available for 1-2 day **PRONTO**® shipment.

Dimensions in Inches

Dia. A	Wheel			Swivel Caster		Rigid Caster		Load Cap. Lbs.	Total Ht. B	Swivel Offset G
	Face	Type	Replacement Number	Catalog Number	Wt. Lbs.	Catalog Number	Wt. Lbs.			
6	3	Forged Steel	W-630-FST-1	★S-PSD-6FS	39 ^{3YR}	★R-PSD-6FS	33 ^{3YR}	4200*	8 1/2	2 1/4
		Forged Steel	W-830-FST-1	★S-PSD-8FS	39 ^{3YR}	★R-PSD-8FS	33 ^{3YR}	4700*		
8	3	Superlast®	W-830-SYT-1	★S-PSD-8SYT	44 ^{3YR}	★R-PSD-8SYT	38 ^{3YR}	3500	10 1/2	2 1/4
		SuperlastXC®	W-830-SYT70-1 1/4	S-PSD-8SYT70	44 ^{3YR}	R-PSD-8SYT70	38 ^{3YR}	4550		
10	3	Forged Steel	W-1030-FST-1	★S-PSD-10FS	48 ^{3YR}	★R-PSD-10FS	41 ^{3YR}	5000*	12 1/2	2 1/4

* Capacity ratings are conservatively based on 2500 hours of wheel bearing life at 2 mph.