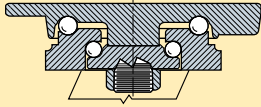


QUALITY FEATURES:

Swivel Construction – ¼" thick forged stainless steel mounting plate; ¼" x 2" plate steel legs robotically welded inside and outside to forged stainless steel horn base.



Kingpin – Sturdy ¾" diameter integrally forged with mounting plate, threaded for lock nut.

Main Load Bearing – Machined raceway with ⅜" dia. stainless steel balls.

Secondary Load Bearing – Machined raceway with ⅝" diameter stainless steel balls

Axle – Stainless steel, ½" dia. hex head with lock nut.

Wheel Bearings – Stainless Steel Double Shielded Precision Ball Bearings with Stainless Steel Top-Hat Spanners or Delrin Bearings.

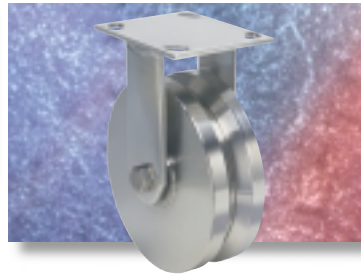
Lubrication Fittings – Stainless Steel ball-check type in swivel assembly.

The product engineering department at Hamilton Caster is proud to release this first of its kind heavy duty stainless steel caster series rated up to 1,600 lbs. load capacity! This caster is designed for extra heavy loads in severe applications where corrosive environments or sanitary considerations demand having all fork and hardware components of stainless steel. The forged stainless steel swivel caster construction includes a ¾" diameter integrally forged kingpin that is guaranteed for life!

Each caster undergoes a special process after fabrication to insure the removal of embedded contaminants, edge burrs, and surface stresses. The resulting high-lustre finish not only enhances appearance but provides a smoother, less porous surface that's impervious to dirt and easier to clean – making these casters ideal for chemical factories, food production facilities, pharmaceutical houses, and other wash-down environments. For lighter duty stainless steel casters, see page 54 and 55.



#R-WHS-6SVS showing Stainless Steel V-Grooved wheel



#S-WHS-6SB Swivel showing Stainless Steel wheel

OPTIONAL ACCESSORIES

– see pages 18 & 19.

- Swivel Locks – 4-position (★-4SL).
- Wheel Brakes – (★-SZB).
- Sealed Swivel Assembly.



Wheel Types



Aqualite® Poly-Tech® Stainless Unilast®

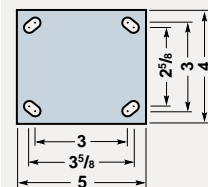
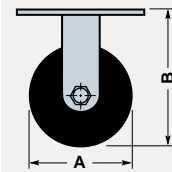
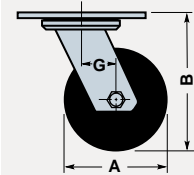
Rigid models match the swivels in height and bolt hole pattern. Legs ¼" x 2" and ¼" thick mounting plate are Type 304 stainless steel.

★ = available for 1-2 day **PRONTO**® shipment.

Dimensions in Inches

Dia. A	Face	Wheel Type	Swivel Caster			Rigid Caster			Load Cap. Lbs.	Overall Height B	Swivel Offset G
			Catalog No. Precision Ball Brgs	Catalog No. Delrin Brgs	Wt. Lbs.	Catalog No. Precision Ball Brgs	Catalog No. Delrin Brgs	Wt. Lbs.			
4	2	Aqualite®	X	★S-WHS-4AZ	6	X	★R-WHS-4AZ	3½	550	5%	1¾
		Poly-Tech®	X	★S-WHS-4NFZ	6	X	★R-WHS-4NFZ	3½	750		
		Stainless Steel	★S-WHS-4SB	★S-WHS-4SZ	12½	★R-WHS-4SB	★R-WHS-4SZ	10	850		
		Stainless Steel V	★S-WHS-4SVB	★S-WHS-4SVZ	12	★R-WHS-4SVB	★R-WHS-4SVZ	9½	850		
		Unilast®	★S-WHS-4UYSB	★S-WHS-4UYZ	6	★R-WHS-4UYSB	★R-WHS-4UYZ	3½	750		
5	2	Aqualite®	X	★S-WHS-5AZ	7	X	★R-WHS-5AZ	4	650	6½	2
		Poly-Tech®	X	★S-WHS-5NFZ	7	X	★R-WHS-5NFZ	4	1000		
		Stainless Steel	★S-WHS-5SB	★S-WHS-5SZ	15	★R-WHS-5SB	★R-WHS-5SZ	14	950		
		Stainless Steel V	★S-WHS-5SVB	★S-WHS-5SVZ	14½	★R-WHS-5SVB	★R-WHS-5SVZ	13	950		
		Unilast®	★S-WHS-5UYSB	★S-WHS-5UYZ	7	★R-WHS-5UYSB	★R-WHS-5UYZ	4	900		
6	2	Aqualite®	X	★S-WHS-6AZ	8	X	★R-WHS-6AZ	5	750	7½	2½
		Poly-Tech®	X	★S-WHS-6NFZ	8	X	★R-WHS-6NFZ	5	1000		
		Stainless Steel	★S-WHS-6SB	★S-WHS-6SZ	22	★R-WHS-6SB	★R-WHS-6SZ	19	1200*		
		Stainless Steel V	★S-WHS-6SVB	★S-WHS-6SVZ	21	★R-WHS-6SVB	★R-WHS-6SVZ	18	1200*		
		Unilast®	★S-WHS-6UYSB	★S-WHS-6UYZ	8	★R-WHS-6UYSB	★R-WHS-6UYZ	5	1100*		
8	2	Aqualite®	X	★S-WHS-8AZ	9	X	★R-WHS-8AZ	6	900	9½	2¾
		Poly-Tech®	X	★S-WHS-8NFZ	9	X	★R-WHS-8NFZ	6	1000		
		Stainless Steel	★S-WHS-8SB	★S-WHS-8SZ	35	★R-WHS-8SB	★R-WHS-8SZ	32	1600*		
		Stainless Steel V	★S-WHS-8SVB	★S-WHS-8SVZ	34	★R-WHS-8SVB	★R-WHS-8SVZ	31	1600*		
		Unilast®	★S-WHS-8UYSB	★S-WHS-8UYZ	9	★R-WHS-8UYSB	★R-WHS-8UYZ	6	1500*		

* Capacity for Precision Ball Bearings; Delrin bearings will limit load capacity to 1,000 lbs.



SWIVEL MOUNTING PLATE 4" x 5", rigid plate 4" x 4½", both with holes slotted 2⅝" x 3⅝" to 3" x 3" for ⅝" bolts.