

Maxi-Duty Casters Series MD — Cap. to 20,000 lbs.



#S-MD-84FST
Swivel showing
Forged Steel wheel



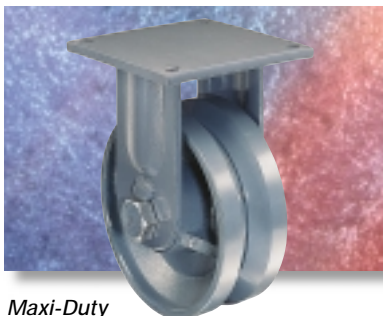
Move up to 10 tons on **Maxi-Duty** Casters, designed and built for the toughest applications including shipbuilding, manufactured housing, automotive and aerospace. Long life and dependable service are assured with Hamilton's premium forged steel swivel construction. All forged steel wheels are machined with a slight crown to enhance rollability and swiveling.

OPTIONAL ACCESSORIES

— see pages 18 & 19.

- Main Unit Load Bearing (in lieu of balls).
- Swivel Locks - 2 or ★ 4 position.
- Wheel Brakes (-HB, -HCB).
- Wheel Bearing Seals.
- Sealed Swivel Assembly.
- V-Grooved wheel models, see pg. 58.

#R-MD-104FVH Rigid showing
V-Grooved wheel

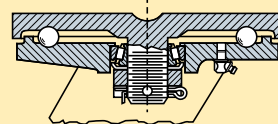


Maxi-Duty
Rigid models feature reinforced $\frac{3}{8}$ " x 5" plate steel legs, continuously welded inside and outside to $\frac{1}{2}$ " thick mounting plates. See pg. 58 for V-Grooved wheel models.

HAMILTON®

QUALITY FEATURES:

Swivel Construction — $\frac{5}{8}$ " thick drop forged steel mounting plate (rigid plate $\frac{1}{2}$ " thick); $\frac{3}{8}$ " x 5" plate steel contoured legs are welded inside and outside to forged steel horn base.



Kingpin — $\frac{1}{4}$ " dia. integrally forged with mounting plate prevents bending or breaking; threaded for slotted adjusting nut.

Main Load Bearing — 7" dia. raceway with $\frac{5}{8}$ " polished steel balls flame-hardened (to Rockwell C50).

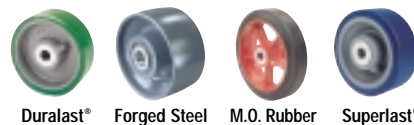
Secondary Load Bearing — $\frac{1}{4}$ " precision tapered thrust bearing counteracts radial thrust.

Axle — $\frac{1}{4}$ " hex head with lock nut.

Wheel Bearings — $\frac{1}{4}$ " precision tapered bearings mounted directly on axle; or $\frac{1}{2}$ " hardened and ground straight roller bearing rotates on $\frac{1}{2}$ " O.D. x $\frac{1}{4}$ " I.D. hardened and ground steel spanner bushing.

Lubrication Fittings — Ball-check type in swivel assembly and wheel hub.

Wheel Types

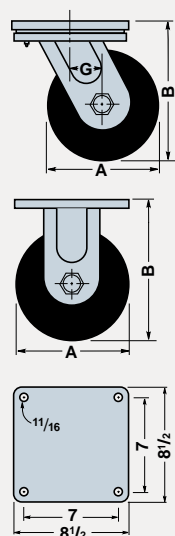


Duralast® Forged Steel M.O. Rubber Superlast®

★ = available for 1-2 day **PRONTO®** shipment.

Dimensions in Inches

Wheel					Swivel Caster		Rigid Caster		Load Cap. Lbs.	Overall Height B	Swivel Offset G
Dia. A	Face	Type	Replacement Number	Bearing Type	Catalog Number	Wt. Lbs.	Catalog Number	Wt. Lbs.			
6	3	Forged Steel	W-630-FST-1½	Tapered	★S-MD-63FST	50	★R-MD-63FST	38	12000	10	2½
		Forged Steel	W-630-FSH-1½	Straight	S-MD-63FSH	50	R-MD-63FSH	38	4500		
8	3	Forged Steel	W-830-FST-1¼	Tapered	★S-MD-83FST	59	★R-MD-83FST	43	6000	11	2½
		Superlast®	W-830-SYT-1¼	Tapered	★S-MD-83SYT	63	★R-MD-83SYT	47	3500		
	4	Forged Steel	W-840-FST-1¼	Tapered	★S-MD-84FST	75	★R-MD-84FST	59	17000		
		Forged Steel	W-840-FSH-1¼	Straight	S-MD-84FSH	75	R-MD-84FSH	59	6500		
10	3	Forged Steel	W-1030-FST-1¼	Tapered	★S-MD-103FST	65	★R-MD-103FST	50	6500	13	3
		Forged Steel	W-1040-FST-1¼	Tapered	★S-MD-104FST	85	★R-MD-104FST	70	18000		
	4	Forged Steel	W-1040-FSH-1½	Straight	S-MD-104FSH	85	R-MD-104FSH	70	7500		
		Superlast®	W-1040-SYT-1¼	Tapered	★S-MD-104SYT	85	★R-MD-104SYT	70	5000		
	5	Duralast®	W-1050-DT-1¼	Tapered	S-MD-105DT	88	R-MD-105DT	73	5000		
12	4	Superlast®	W-1240-SYT-1¼	Tapered	★S-MD-124SYT	104	★R-MD-124SYT	94	6000	15½	3¼
		Steel	W-1240-FST-1¼	Tapered	S-MD-124FST	174	R-MD-124FST	164	20000		
	5	Duralast®	W-1251-DT-1¼	Tapered	S-MD-125DT	101	R-MD-125DT	91	6200		
		M.O. Rubber	W-1250-RT-1¼	Tapered	S-MD-125RT	98	R-MD-125RT	88	2050		
16	4	Duralast®	W-1640-DT-1¼	Tapered	S-MD-164DT	114	R-MD-164DT	104	5500	19½	3¼
		Duralast®	W-1650-DT-1¼	Tapered	S-MD-165DT	125	R-MD-165DT	115	7700		
	5	M.O. Rubber	W-1650-RT-1¼	Tapered	S-MD-165RT	123	R-MD-165RT	113	2570		



MOUNTING PLATE
8½" x 8½" with
7" x 7" hole centers
for 5/8" bolts.