

This innovative stainless steel series ably complements the heavier duty Series STA described on the previous page. **Series STL** features a complete line of wheel offerings with face widths under 2", including wheels of stainless steel. Most offerings are available for **PRONTO®** shipment within 2 days.

Manufactured from all-stainless steel components, these casters undergo a special process resulting in a handsome, high lustre finish that is less porous and easier to clean than comparable stainless steel brands. A sealed swivel assembly is standard on **Series STL** casters.

Ideal for corrosive environments and wherever sanitary considerations are important, **Series STL** casters are well suited for pharmaceutical houses, food service operations, animal cages, laboratories, and other institutional applications.

QUALITY FEATURES:

Swivel Construction – Mounting plate and horn base, Type 304 stainless steel. Sealed swivel assembly standard.

Kingpin – permanent rivet-type, ½" diameter stainless steel.

Main and Secondary Load Bearings – Type 440 stainless steel balls rotating in two smoothly coined raceways.

Axle – ⅜" diameter stainless steel lube-type bolt and lock nut.

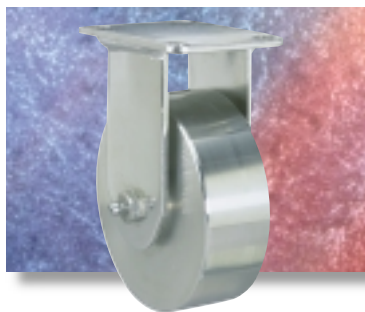
Wheel Bearings – vary according to type of wheel; see chart.

Lubrication – Pre-lubricated at factory with a high quality multi-purpose grease.



#S-STL-5NFS
Swivel showing
Poly-Tech® wheel

#R-STL-4S Rigid showing
Stainless Steel wheel



#S-STL-4A-SSCB Swivel showing Aqualite
wheel and Tread Contact Brake



OPTIONAL ACCESSORIES

– see pages 18 & 19.

● Wheel Brakes (★-SSCB [4" and 5" swivels only]).

Wheel Types



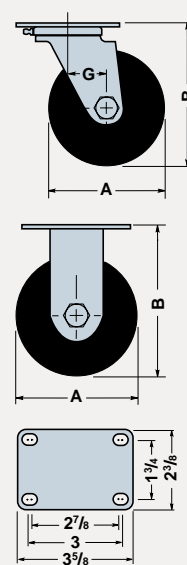
Aqualite® Plastex Poly-Tech® Stainless Unilast® Versa-Tech®

★ = available for 1-2 day **PRONTO®** shipment.

Dimensions in Inches

Dia. A	Wheel				Swivel Caster		Rigid Caster		Load Cap. Lbs.	Overall Height B	Swivel Offset G
	Face	Type	Bearing	Replacement Number	Catalog Number	Wt. Lbs.	Catalog Number	Wt. Lbs.			
3 1/2	1 3/8	Aqualite®	Plain	W-35-A-1/2	★S-STL-35A	1 1/4	★R-STL-35A	1 1/2	260	4 7/8	1 1/8
		Poly-Tech®	Delrin	W-35-NFZ-1/2	★S-STL-35NFZ	2	★R-STL-35NFZ	1 3/4	325		
		Versa-Tech®	Delrin	W-35-TEZ-1/2	★S-STL-35TEZ	2	★R-STL-35TEZ	1 3/4	240		
4	1 1/4	Plastex	Plain	W-412-HHPL-1/2	★S-STL-4HHP	2 1/4	★R-STL-4HHP	2	300	5 1/2	1 1/8
		Unilast®	Delrin	W-412-UYZ-1/2	★S-STL-4UYZ	2 1/4	★R-STL-4UYZ	2	325		
		Aqualite®	Plain	W-413-A-1/2	★S-STL-4A	2 1/4	★R-STL-4A	2	300		
	1 3/8	Poly-Tech®	Delrin	W-413-NFZ-1/2	★S-STL-4NFZ	2 1/4	★R-STL-4NFZ	2	325		
		Versa-Tech®	Delrin	W-413-TEZ-1/2	★S-STL-4TEZ	2 1/4	★R-STL-4TEZ	2	250		
		Stainless	Plain	W-413-S-1/2	★S-STL-4S	5 1/2	★R-STL-4S	5 1/2	325		
		S.S. V-Grooved	Plain	W-413-SV-1/2	★S-STL-4SV	5 1/2	★R-STL-4SV	5 1/4	325		
		Stainless	Delrin	W-413-SZ-1/2	★S-STL-4SZ	5 1/2	★R-STL-4SZ	5 1/2	325		
		S.S. V-Grooved	Delrin	W-413-SVZ-1/2	★S-STL-4SVZ	5 1/2	★R-STL-4SVZ	5 1/4	325		
		Stainless	S.S. Ball	W-413-SB-1/2	★S-STL-4SB	5 1/2	★R-STL-4SB	5 1/2	325		
		S.S. V-Grooved	S.S. Ball	W-413-SVB-1/2	★S-STL-4SVB	5 1/2	★R-STL-4SVB	5 1/4	325		
		Plastex	Plain	W-512-HHPL-1/2	★S-STL-5HHP	2 1/2	★R-STL-5HHP	2 1/4	300		
5	1 3/8	Aqualite®	Plain	W-513-A-1/2	★S-STL-5A	2 1/2	★R-STL-5A	2 1/4	300	6 1/2	1 1/8
		Poly-Tech®	Delrin	W-513-NFZ-1/2	★S-STL-5NFZ	2 1/2	★R-STL-5NFZ	2 1/4	325		
		Versa-Tech®	Delrin	W-513-TEZ-1/2	★S-STL-5TEZ	2 1/2	★R-STL-5TEZ	2 1/4	275		

▶ Stainless steel ball bearings also available in these wheels, simply change "Z" to "B"



MOUNTING PLATE

2 3/8" x 3 5/8" (swivel and rigid). Holes slot-
ted 1 3/4" x 2 7/8" to 3".
Bolt size 5/16".