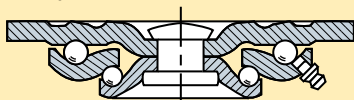


**Series TX**—for "textile"—offers a standard line of casters equipped with thread guards, plus the added feature of wheel spacers that provide a "cleaning gap" between the caster leg and the thread guard to facilitate the removal of threads, lint, etc. All treads are 1½" wide.

Finish is zinc plating (or alternately, some thread guards are galvanized steel), and lube-type axles are provided for relubricating roller bearings in wheels.

### QUALITY FEATURES:

**Swivel Construction** – formed steel mounting plate and horn base. Legs ⅜" x 2" plate steel, contoured and continuously welded to horn base.



**Kingpin** – permanent rivet-type, ⅝" diameter.

**Main and Secondary Load Bearings** – hardened and polished steel balls rotate in two heat treated raceways.

**Axle** – ½" diameter hollow lube-type with lock nut.

**Wheel Bearings** – ⅝" I.D. rotating on ⅝" O.D. x ½" I.D. x 1½" long hardened and ground drilled spanner bushing. Delrin® bearings are standard in **Aqualite®** wheels, case hardened straight roller bearings in all others.

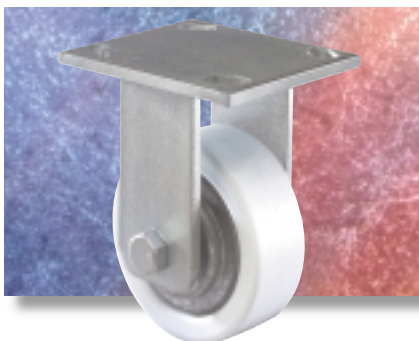
**Ball-check Lubrication Fittings** – to swivel bearings and in lube axle to wheel bearings.

### OPTIONAL ACCESSORIES

– see pages 18 & 19.

- Wheel Brakes, Tread Contact.
- Swivel Locks.
- Wheel Bearing Seals, for roller bearing wheels.
- Sealed Swivel Assembly.

#R-TX-4AZ Rigid showing Aqualite® wheel

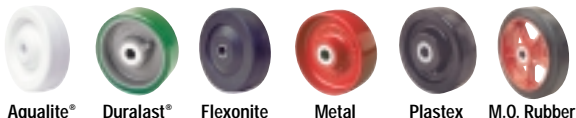


Rigid TX models feature ¼" thick mounting plates, to which husky ¼" x 2" plate steel legs are welded inside and outside.

#S-TX-5P Swivel showing Plastex wheel



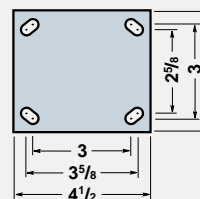
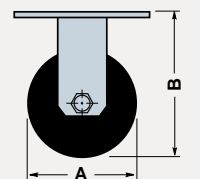
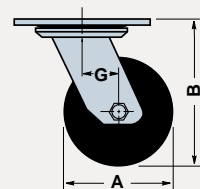
### Wheel Types



Aqualite® Duralast® Flexonite Metal Plastex M.O. Rubber

Dimensions in Inches

Dia. A	Wheel			Swivel Caster		Rigid Caster		Load Cap. Lbs.	Overall Height B	Swivel Offset G
	Face	Type	Replacement Number	Catalog Number	Wt. Lbs.	Catalog Number	Wt. Lbs.			
4	1½	Aqualite®	W-415-AZ-⅝	S-TX-4AZ	4	R-TX-4AZ	3½	350	5½	1⅜
		Duralast®	W-415-D-⅝	S-TX-4D	5¾	R-TX-4D	5½	675		
		Flexonite	W-415-FH-⅝	S-TX-4F	4¾	R-TX-4F	4¼	200		
		Metal	W-415-M-⅝	S-TX-4M	6½	R-TX-4M	6	550		
		M.O.Rubber	W-415-R-⅝	S-TX-4R	5¾	R-TX-4R	5½	200		
		Plastex	W-415-P-⅝	S-TX-4P	4¾	R-TX-4P	4¼	600		
5	1½	Aqualite®	W-515-AZ-⅝	S-TX-5AZ	4½	R-TX-5AZ	4	400	6½	1⅞
		Duralast®	W-515-D-⅝	S-TX-5D	6¾	R-TX-5D	6½	700		
		Ebonite	W-515-EH-⅝	S-TX-5E	6	R-TX-5E	5½	450		
		Flexonite	W-515-FH-⅝	S-TX-5F	6	R-TX-5F	5½	240		
		Metal	W-515-M-⅝	S-TX-5M	6¾	R-TX-5M	6½	750		
		M.O.Rubber	W-515-R-⅝	S-TX-5R	6¾	R-TX-5R	6¼	240		
6	1½	Plastex	W-515-P-⅝	S-TX-5P	5½	R-TX-5P	5	600		
		Aqualite®	W-615-AZ-⅝	S-TX-6AZ	5	R-TX-6AZ	4½	525	7½	2⅞
		Duralast®	W-615-D-⅝	S-TX-6D	7	R-TX-6D	6½	850		
		Flexonite	W-615-FH-⅝	S-TX-6F	6	R-TX-6F	5½	280		
		Metal	W-615-M-⅝	S-TX-6M	10	R-TX-6M	9½	850		
		M.O.Rubber	W-615-R-⅝	S-TX-6R	7½	R-TX-6R	7	280		
		Plastex	W-615-P-⅝	S-TX-6P	6	R-TX-6P	5½	800		



**MOUNTING PLATE**  
4" x 4½" (swivel and rigid). Holes slotted 2⅝" x 3⅝" to 3" x 3". Bolt size ⅝".