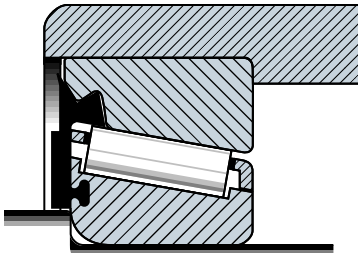


WHEEL BEARING SEALS

Seals to keep grease in, and dirt out, aid bearing life and good housekeeping.



Straight Roller Bearing Seals. A flexible oil-resistant synthetic rubber lip is bonded to the inner circumference of a retaining washer. One such seal-washer is then press-fit into each end of the wheel hub in place of the standard retaining washer. Furnished at no extra cost if specified on Series EHD, CH, A, ES, FM, HS and WH casters; slight extra cost on other caster series or on wheels only. Not available with 1½" bearings. To order, add suffix **-BS** to catalog number.



Tapered Roller Bearing Seals are also available with most casters and wheels that offer ¾", 1" or 1¼" tapered bearings. Most often furnished is an integrally sealed assembly supplied by the bearing manufacturer (illustrated), comprising two lips for sealing both O.D. and face (suffix **-DS**). For certain 1¼" and larger tapered bearings, Hamilton provides a rubber seal and spacer (suffix **-CRS**).

SEALED SWIVEL ASSEMBLIES



The main and secondary swivel bearing raceways of some Hamilton casters can be ordered with seals by adding the suffix **-SS** to the caster catalog number. Cold-forged Series MS (pg. 28), GS (pg. 29), 52 (pp. 30-31), WW (pg. 32), TG (pg. 46) and TX (pg. 47) can be sealed with special synthetic rubber rings fitted around the circumference of the raceways (illustrated).

Hot forged Series HS (pg. 26) is sealed by fitting a special quad ring around the horn base and using an integrally sealed secondary bearing; however, this arrangement is not available with the swivel lock option.

THREAD GUARDS

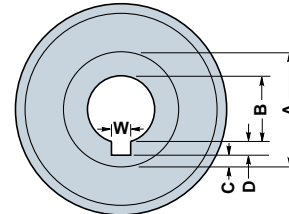


Thread or string guards are fixed discs that fit over the wheel hub to prevent lint, etc. from clogging the axle or bearing. They are always installed in pairs, one on each side of the hub tightened between the spanner bushing and caster legs to prevent rotation. Hamilton offers two series of casters that come standard with thread guards—see pages 46 and 47.

Thread Guards are also available with most types of wheels listed in any series that shows them as an optional extra. To order, add suffix **-TG** to caster catalog number. (Lube type axles and drilled spanner bushings are always required when thread guards are specified with roller bearing wheels).

KEYWAYS

Keyways for square keys can be machined on special order in most Hamilton wheels having semi-steel or forged steel hubs, the only limitation being the wall thickness (Dimension **C**) remaining between the bottom of the keyway and the outside of the hub diameter (Dimension **A**). We do not recommend machining keyways in aluminum-center or Plastex Wheels; also, the hubs of Pneumatic, Semi-Pneumatic, and plastic-hub wheels do not have sufficient thickness for keyways.



When requesting keyways, be sure to specify bore size required (Dimension **B**) and keyway size (Dimension **W** designating width, and **D** designating depth). Should you not wish to specify keyway dimensions, the factory will be glad to recommend the size commonly used for the bore specified. Note that the keyway width will normally be twice the depth, since we are usually machining for square keys. The factory will not accept responsibility for machining keyways where the remaining hub wall (Dimension **C**) will be less than ¼".

In the case of all-metal wheels, the face should be machined to ensure good concentricity (extra cost option). Resilient tread wheels with keyways will not, of course, provide the degree of concentricity achievable with the fully-machined metal wheel.

Because the use of keyed drive wheels generates more stresses than encountered in free-wheeling caster applications, our normal warranty does not apply. Vulcanized rubber and polyurethane treads are especially prone to shorter life expectancy, so we recommend reducing capacity ratings of these by 50%.

Set screws are also available with keyways. If one set screw is desired it will be placed over the keyway, and if two are desired one will be over the keyway and the other at 90°, unless otherwise specified. We do not supply keys or keyed shafts.

Wheels with keyways are designated by the suffix **-K** after the catalog number.

SWIVEL LOCKS

Provides fingertip conversion of swivel caster to rigid caster for straight line steering control.



Springloaded plunger housed beneath caster mounting plate positively engages slots milled in the swivel horn base. When retracted, plunger sits in a vertical notch in the housing to hold it clear of the swivel horn.

Available with 4-positions at 90° intervals (to order, add suffix **-4SL** to caster catalog number); or 2-positions at a 180° interval for steering in fore-and-aft direction only (to order, add suffix **-2SL** to caster catalog number). Can be furnished with Hamilton swivel casters as follows:

2-Position

Series MD, MDD, PSD, EHD, CH, A, ES, FM (8" only), HS, WH, STA, 7000, 7200, 8000 (#8008/8010), and Dual Wheel MDD, EHD, or HS.

4-Position

Series MD, MDD, PSD, EHD, CH, A, ES, FM (8" only), HS, WH, MS (6" only), 52, 7000, 7200, 8000 (various models), 4000 (#4208 only), and Dual-Wheel MDD, EHD, or HS.