

Speed Series

Load Rating (ea.): 500 – 34,000 lbs.

When you feel the need for speed, Hamilton's "Speed" product offering features Hamilton's TerraTech® wheels with press-on tires designed for applications moving heavy loads at speeds up to 10 mph. TerraTech® wheels are available in 3 different compounds to cover a wide spectrum of industrial environments. Mounted in our maintenance free Spinfinity® casters makes an unstoppable combination.

Industries & Applications:

- Heavy fabrication
- Heavy material handling
- Energy – oil & gas
- Aerospace & defense
- Steel, mining, aggregate
- Transportation & Construction



Spinfinity® ZFSEC w/TerraTech®

Load Rating (ea.): Up to 5800 lbs.

- 5-1/4" x 7-1/4" mounting plate
- Move heavy loads @ speeds up to 10 mph
- Wheel Diameters: 9" - 12"



Spinfinity® Dual ZFSEC2 w/TerraTech®

Load Rating (ea.): Up to 6000 lbs.

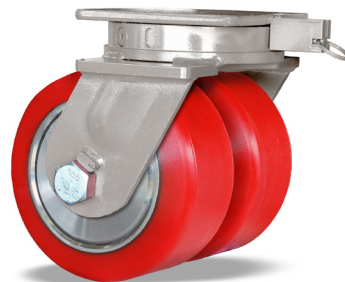
- Features new TerraTech® Presson Wheels
- 3-5/8" diameter machined raceway
- 100% Maintenance-free



Spinfinity® ZFMD w/TerraTech®

Load Rating (ea.): Up to 15,600 lbs.

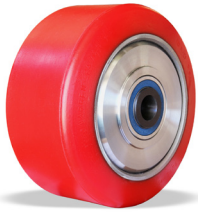
- 8-1/2 x 8-1/2 mounting plate
- Move heavy loads @ speeds up to 10 mph
- Wheel Diameters: 12" - 18"



Spinfinity® Dual ZFMD w/TerraTech®

Load Rating (ea.): 2000 - 8400 lbs.

- Dual wheels for added stability & lower overall height
- 7" CNC machined raceway
- Wheel Diameters: 12" - 16"



TerraTech® Standard

Load Rating (ea.): 1600 - 34,000 lbs.

- Best for tough terrain
- Highest load rating
- Highest tear resistance



TerraTech® ULTRA

Load Rating (ea.): 1800 - 15,300 lbs.

- Best choice for outdoor applications
- Ideal for 24/7 operations
- Smaller sizes have CNC-machined treads for ultra smooth ride



TerraTech® Black Rubber

Load Rating (ea.): 1500 - 22,800 lbs.

- 67A Soft tread for max cushion
- Ideal for outdoor applications
- Maintenance-free Bearing



Low Speed Poly

Load Rating (ea.): 3880 - 17,200 lbs.

- Standard poly featuring tapered roller bearings
- Heavy duty cast iron centers
- Rated for max speed of 3 mph



Low Speed Rubber

Load Rating (ea.): 1500 - 11,100 lbs.

- Features tapered roller bearing
- More cushion than poly tread
- Rated for max speed of 3 mph



Scan to learn how Hamilton's Speed Series casters and wheels can speed up your manufacturing.

